



**DESIGN & CONSTRUCTION GROUP  
THE GOVERNOR NELSON A. ROCKEFELLER  
EMPIRE STATE PLAZA  
ALBANY, NY 12242**

---

**ADDENDUM NO. 2 TO PROJECT NO. 47412**

**CONSTRUCTION, HVAC, PLUMBING, AND ELECTRICAL WORK  
REHABILITATE KITCHEN, DINING HALL & COURTYARD  
FINGER LAKES RESIDENTIAL CENTER  
250 AUBURN ROAD  
LANSING, NEW YORK**

March 27, 2026

**NOTE:** This Addendum forms a part of the Contract Documents. Insert it in the Project Manual. Acknowledge receipt of this Addendum in the space provided on the Bid Form.

**COMMON DRAWINGS**

1. Drawing No. G-003:
  - a. GENERAL SECURITY NOTES Column, Add Notes E & F.

“E. Truck trap entrance clearance is 14’ 5” between Bollards and 15’0” overhead. The length of the truck trap is 79’ 6” and both gates can be opened at the same time for delivery of temporary kitchen trailers. Coordinate delivery with Director’s Representative.”

“F. The West vehicle gate after the truck trap clearance is 14’ 8” between Bollards and 14’11” overhead.”

**CONSTRUCTION WORK DRAWINGS**

2. Revised Drawings:
  - a. Drawing Nos. S-100 and S-300, noted Revised Drawing dated 3/26/2026, accompanies this Addendum and supersedes the same numbered previously issued drawings.

**HVAC WORK DRAWINGS**

3. Drawing No. M-102:
  - a. KEYED NOTES Column, Change Note 2. To read

“2. Drain existing hot water system in entirety and re-fill with 40% Propylene Glycol solution. Assume total system refill volume is 300 gallons. Coordinate System Shutdown with owner. Shutdown after May 1<sup>st</sup> and system shall be active and tested no later than September 30<sup>th</sup>.”

**PLUMBING WORK DRAWINGS**

4. Drawing Nos. P-011 & P-012:
  - a. GENERAL NOTES Column, Change Note A. To read

“A. Excavate and remove below slab piping. Coordinate slab cutting for removals and new work with CC. Refer to S-100.

**END OF ADDENDUM**

Brady Sherlock, P.E.  
Director, Division of Design  
Design & Construction

CONSULTANT  
 CERTIFICATE OF AUTHORIZATION NUMBER:  
 PROFESSIONAL ENGINEERING: 018281  
 LAND SURVEYING: 017979  
 GEOLOGICAL: 018750



EXPIRATION DATE: September 30, 2027



RYAN BIGGS  
 CLARK DAVIS  
 ENGINEERING & SURVEYING  
 CERTIFICATE OF AUTHORIZATION #: 0023272

**WARNING:**  
 THE ALTERATION OF THIS MATERIAL IN ANY WAY, UNLESS DONE UNDER THE DIRECTION OF A COMPARABLE PROFESSIONAL, I.E. ARCHITECT FOR AN ARCHITECT, ENGINEER FOR AN ENGINEER OR LANDSCAPE ARCHITECT FOR A LANDSCAPE ARCHITECT, IS A VIOLATION OF THE NEW YORK STATE EDUCATION LAW AND/OR REGULATIONS AND IS A CLASS 'A' MISDEMEANOR.

**CONSTRUCTION**

TITLE: REHABILITATE KITCHEN, DINING HALL & COURTYARD

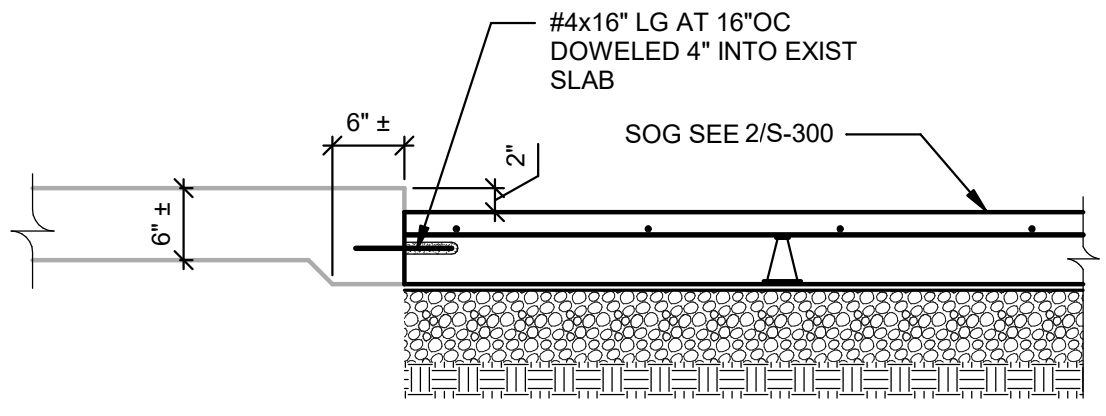
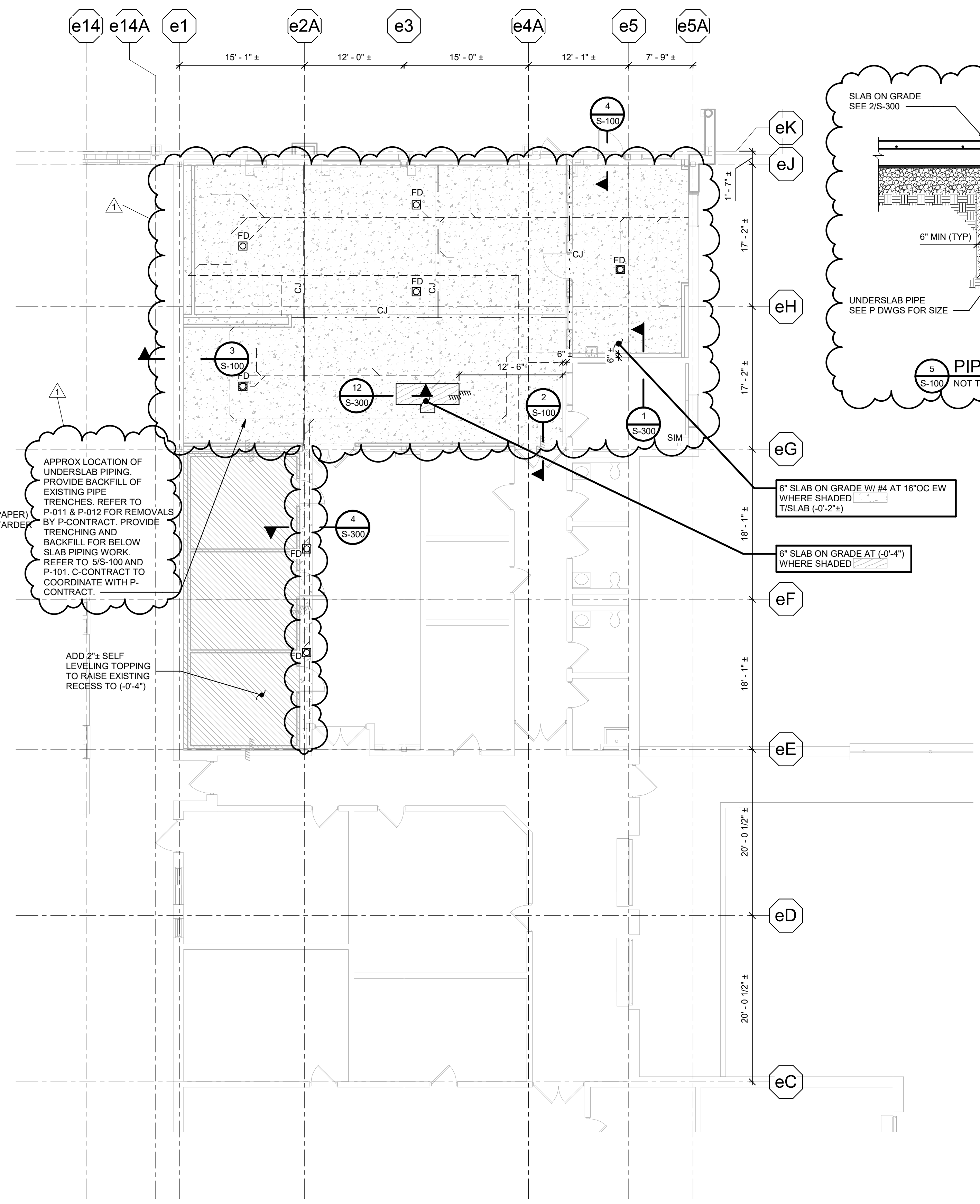
LOCATION: FINGER LAKES RESIDENTIAL CENTER  
 250 AUBURN ROAD  
 LANSING, NEW YORK

CLIENT: OFFICE OF CHILDREN AND FAMILY SERVICES

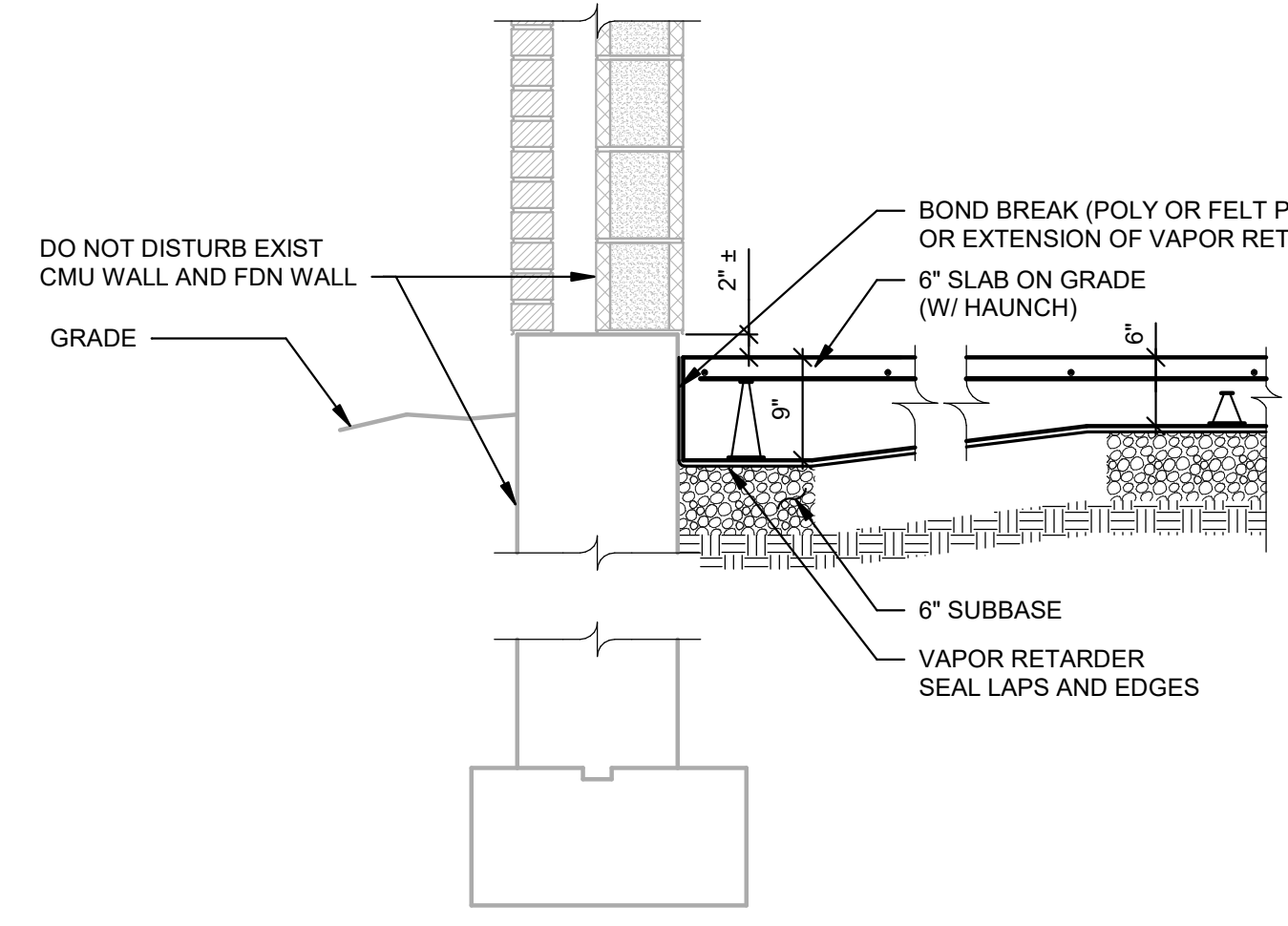
| MARK  | DATE       | DESCRIPTION     |
|-------|------------|-----------------|
| Δ     | 03/26/2026 | REVISED DRAWING |
| FINAL | 12/11/2025 | BID DOCUMENT    |

PROJECT NUMBER: 47412-C  
 DESIGNED BY: JLD  
 DRAWN BY: KMR  
 FIELD CHECK: LF  
 APPROVED: JLD

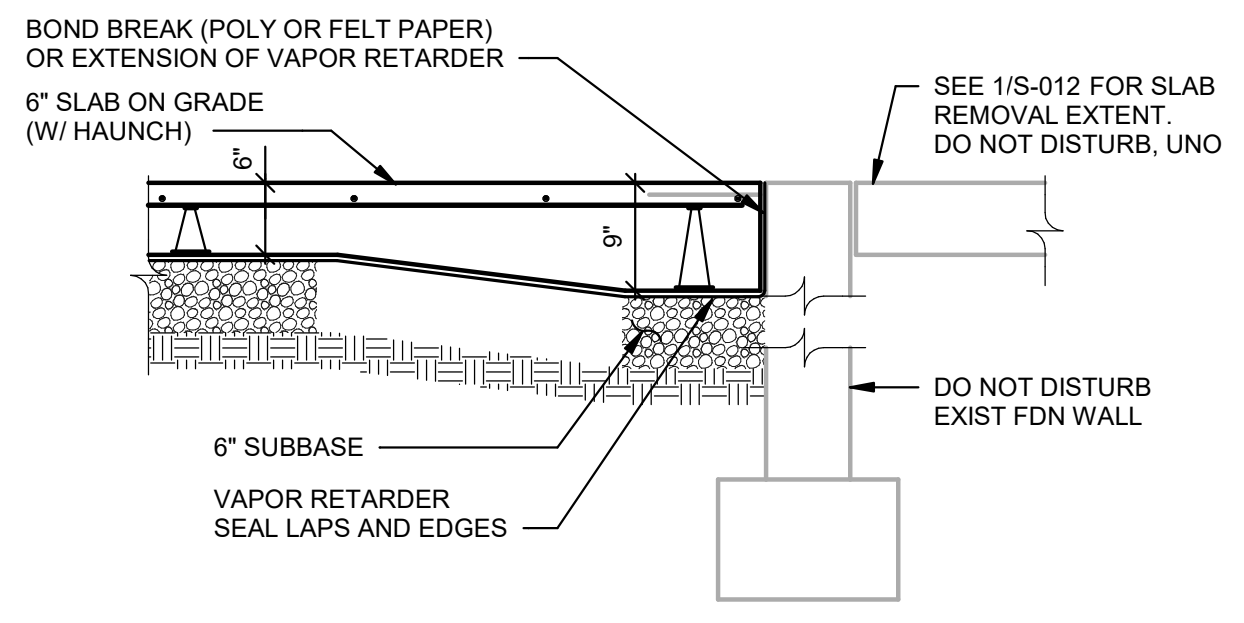
SHEET TITLE: FOUNDATION PLAN  
 DRAWING NUMBER: S-100  
 SHEET 36 OF 113



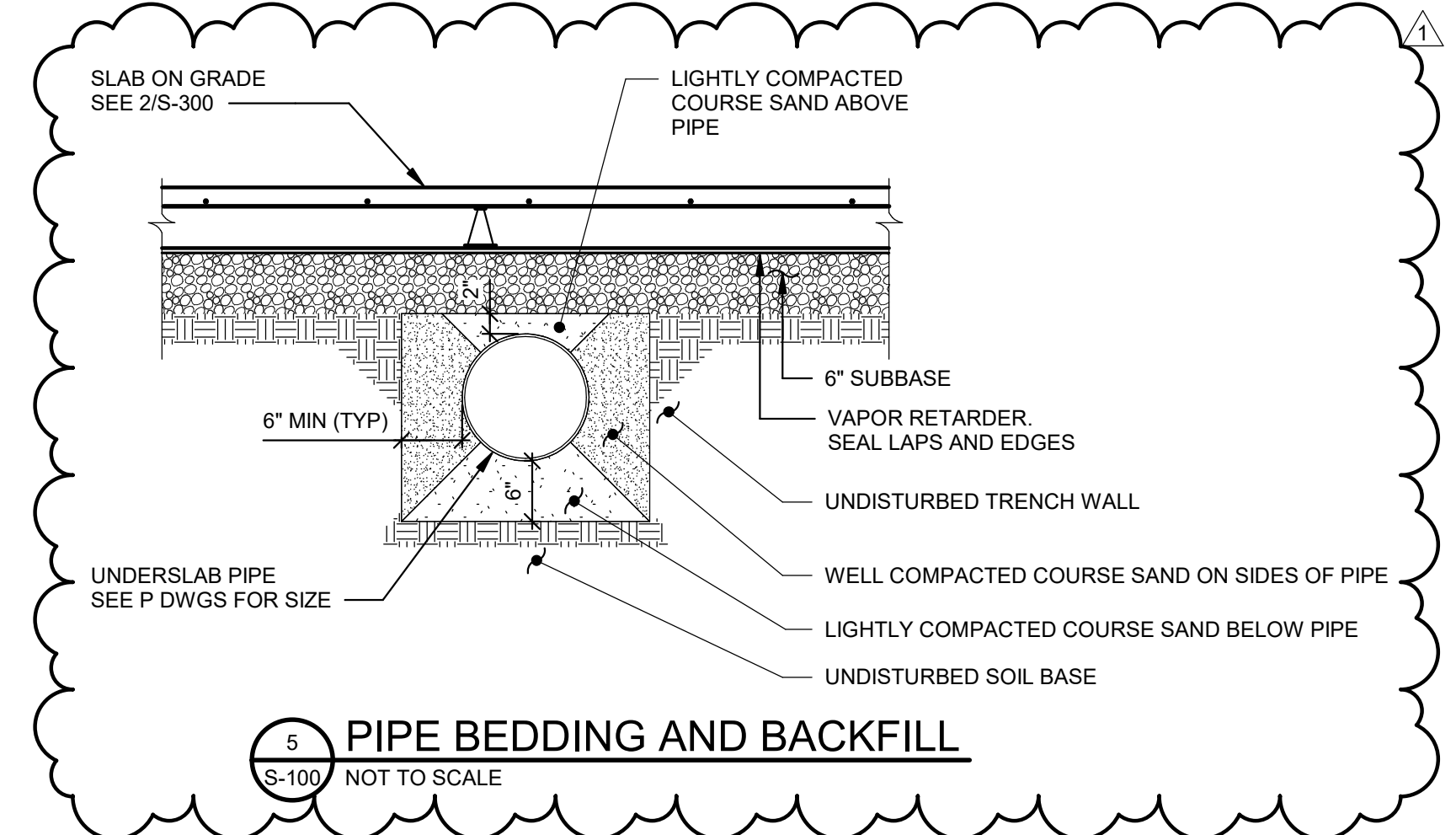
2 SLAB REPLACEMENT AT EXISTING SLAB DEPRESSION  
 S-100 NOT TO SCALE



3 SLAB REPLACEMENT AT EXISTING EXTERIOR FOUNDATION WALLS  
 S-100 NOT TO SCALE



4 SLAB REPLACEMENT AT EXISTING INTERIOR FOUNDATION WALLS  
 S-100 NOT TO SCALE



5 PIPE BEDDING AND BACKFILL  
 S-100 NOT TO SCALE

APPROX LOCATION OF UNDERSLAB PIPING. PROVIDE BACKFILL OF EXISTING PIPE TRENCHES. REFER TO P-011 & P-012 FOR REMOVALS BY P-CONTRACT. PROVIDE TRENCHING AND BACKFILL FOR BELOW SLAB PIPING WORK. REFER TO S/S-100 AND P-101. C-CONTRACT TO COORDINATE WITH P-CONTRACT.

ADD 2"± SELF LEVELING TOPPING TO RAISE EXISTING RECESS TO (-0'-4")

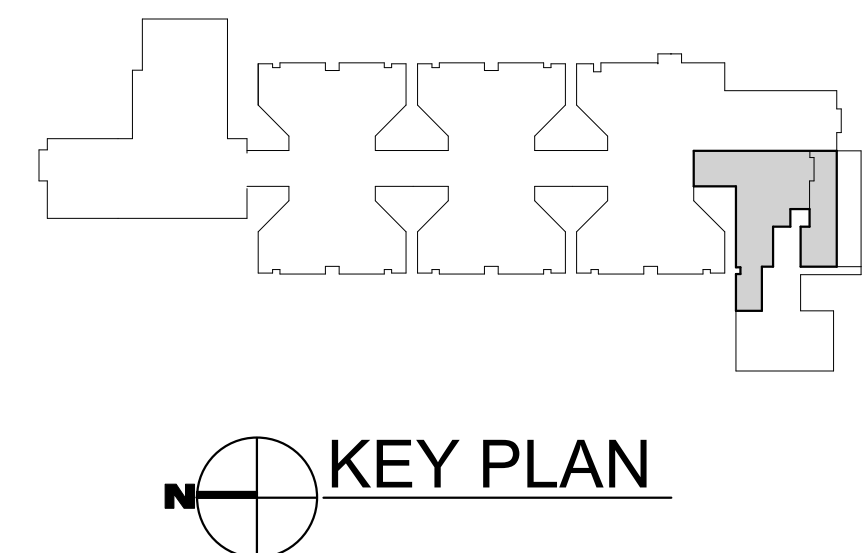
6" SLAB ON GRADE W/ #4 AT 16"OC EW WHERE SHADED

6" SLAB ON GRADE AT (-0'-4") WHERE SHADED

**FOUNDATION LEGEND**

|  |                                                      |
|--|------------------------------------------------------|
|  | - INDICATES SLAB STEP LOCATION. SEE DETAIL 12/S-300. |
|  | - INDICATES APPROXIMATE EXISTING SLAB STEP LOCATION. |

1 FOUNDATION PLAN - KITCHEN  
 S-100 SCALE: 1/8" = 1'-0"



KEY PLAN



**WARNING:**  
THE ALTERATION OF THIS MATERIAL IN ANY WAY, UNLESS DONE UNDER THE DIRECTION OF A COMPARABLE PROFESSIONAL, I.E. ARCHITECT FOR AN ARCHITECT, ENGINEER FOR AN ENGINEER OR LANDSCAPE ARCHITECT FOR A LANDSCAPE ARCHITECT, IS A VIOLATION OF THE NEW YORK STATE EDUCATION LAW AND/OR REGULATIONS AND IS A CLASS 'A' MISDEMEANOR.

**CONSTRUCTION**

TITLE: REHABILITATE KITCHEN, DINING HALL & COURTYARD

LOCATION: FINGER LAKES RESIDENTIAL CENTER  
250 AUBURN ROAD  
LANSING, NEW YORK

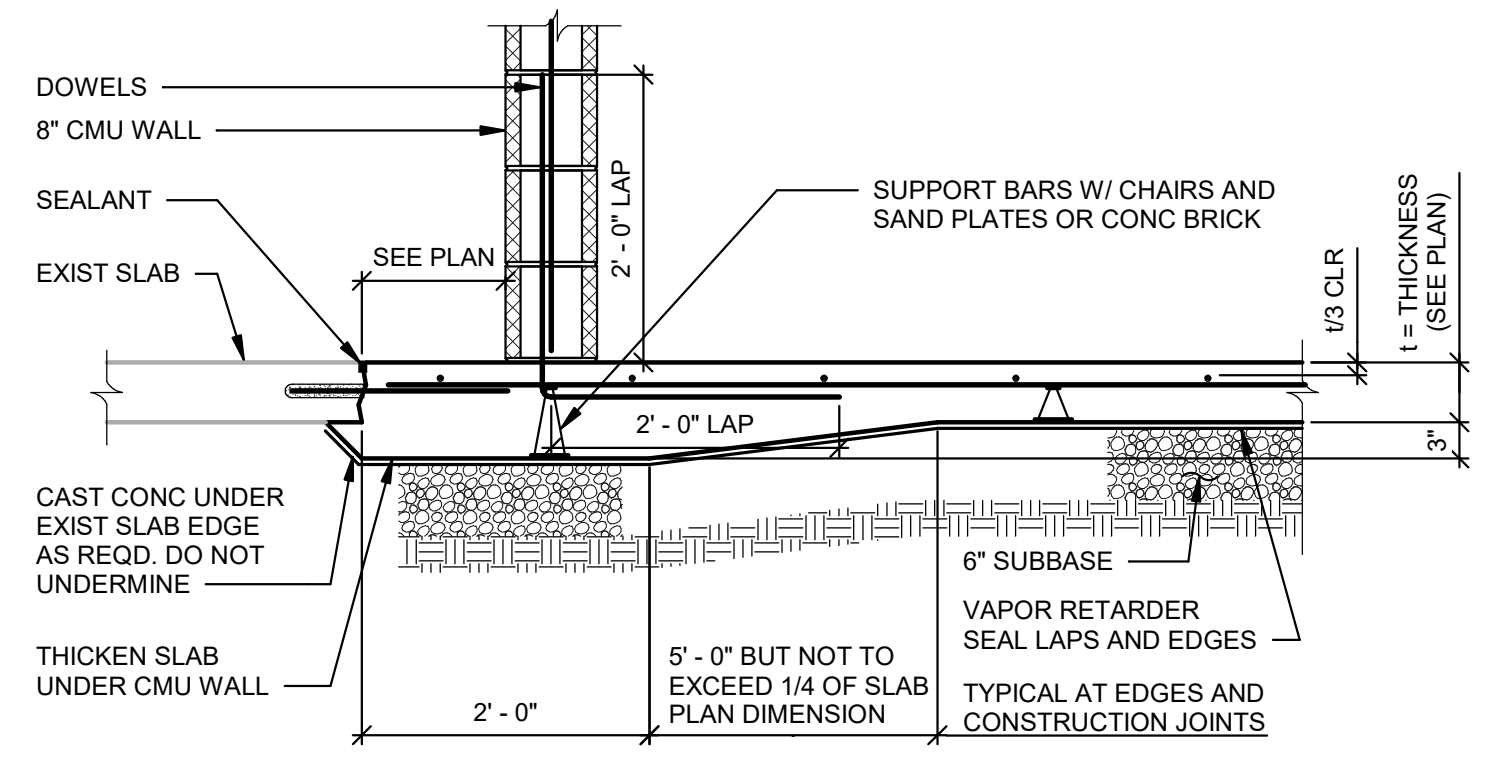
CLIENT: OFFICE OF CHILDREN AND FAMILY SERVICES

| MARK  | DATE       | DESCRIPTION     |
|-------|------------|-----------------|
| FINAL | 03/26/2026 | REVISED DRAWING |
|       | 12/1/2025  | BID DOCUMENT    |

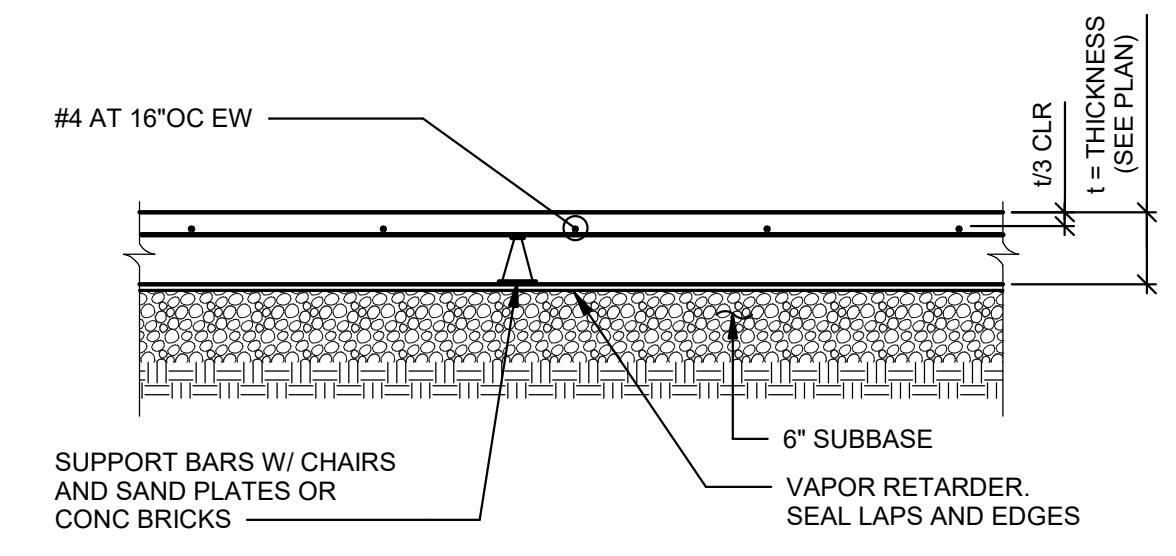
PROJECT NUMBER: 47412-C  
DESIGNED BY: JLD  
DRAWN BY: KMR  
FIELD CHECK: LF  
APPROVED: JLD

SECTIONS AND DETAILS

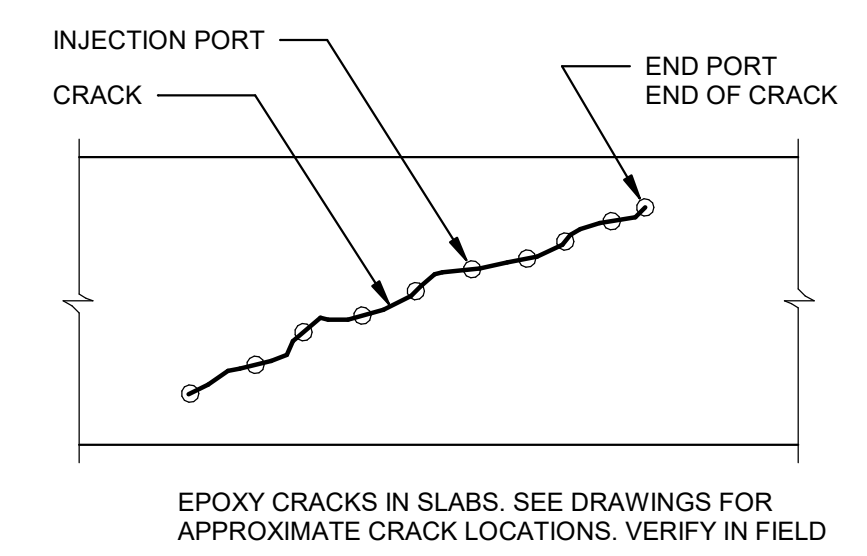
DRAWING NUMBER: S-300



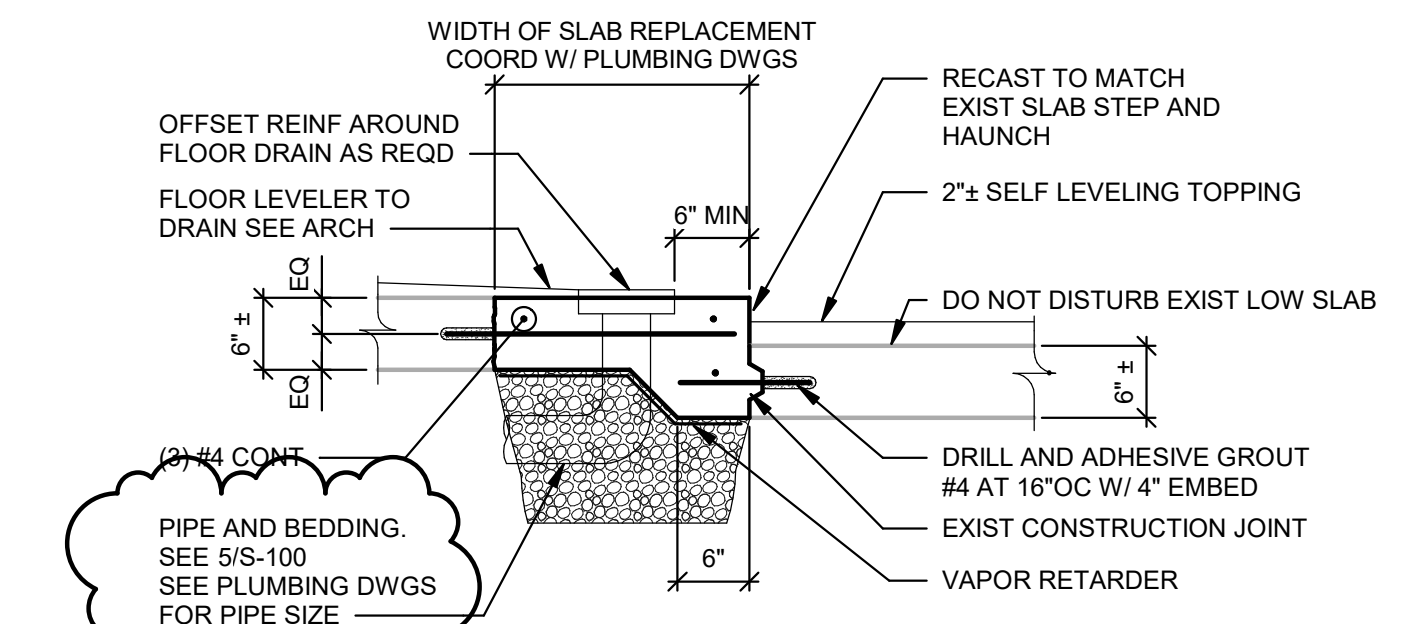
**1 SLAB ON GRADE TYPICAL EDGE SECTION**  
SCALE: 3/4" = 1'-0"  
NOTE: EXIST CMU WALL ON EXIST SOG AT SIM. DO NOT DISTURB.



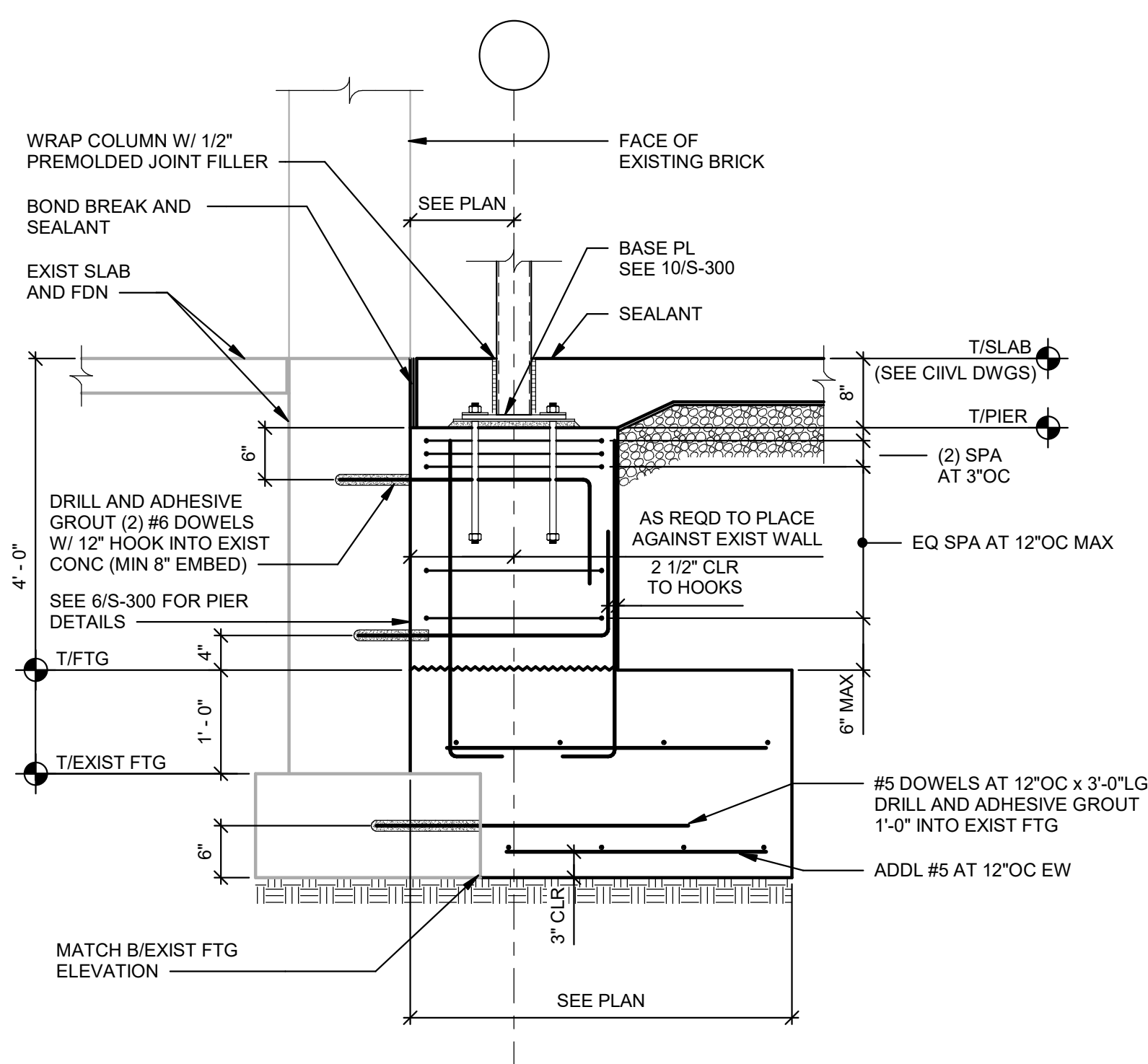
**2 SLAB ON GRADE TYPICAL SECTION**  
SCALE: 3/4" = 1'-0"



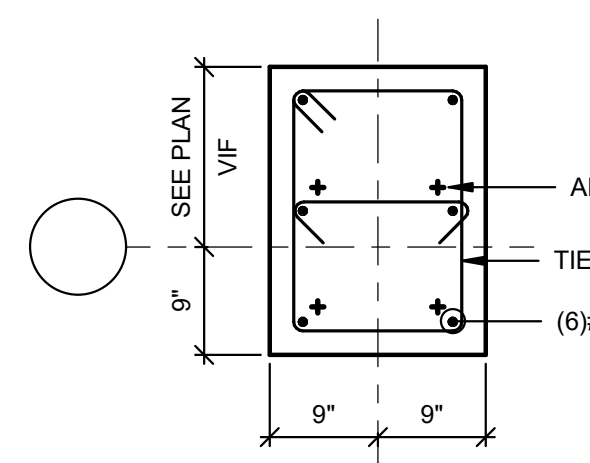
**3 EPOXY INJECTION OF CRACKS**  
NOT TO SCALE  
NOTES:  
1. MEASURE CRACK WIDTH AND VERIFY GREATER THAN EQUAL TO 0.013". IF WIDTH IS LESS THAN 0.013", DO NOT FILL CRACK WITH EPOXY.  
2. DRILL PORT HOLES 4 TO 6 INCHES ON CENTER.  
3. SEAL CRACK SURFACES WITH SURFACE SEALER.  
4. INJECT EPOXY INTO PORT HOLES. INJECTION SHALL NOT PROGRESS TO THE NEXT PORT UNTIL EPOXY FLOWS FROM THAT PORT.  
5. CLEAN SURFACE SEALER FROM SURFACES.



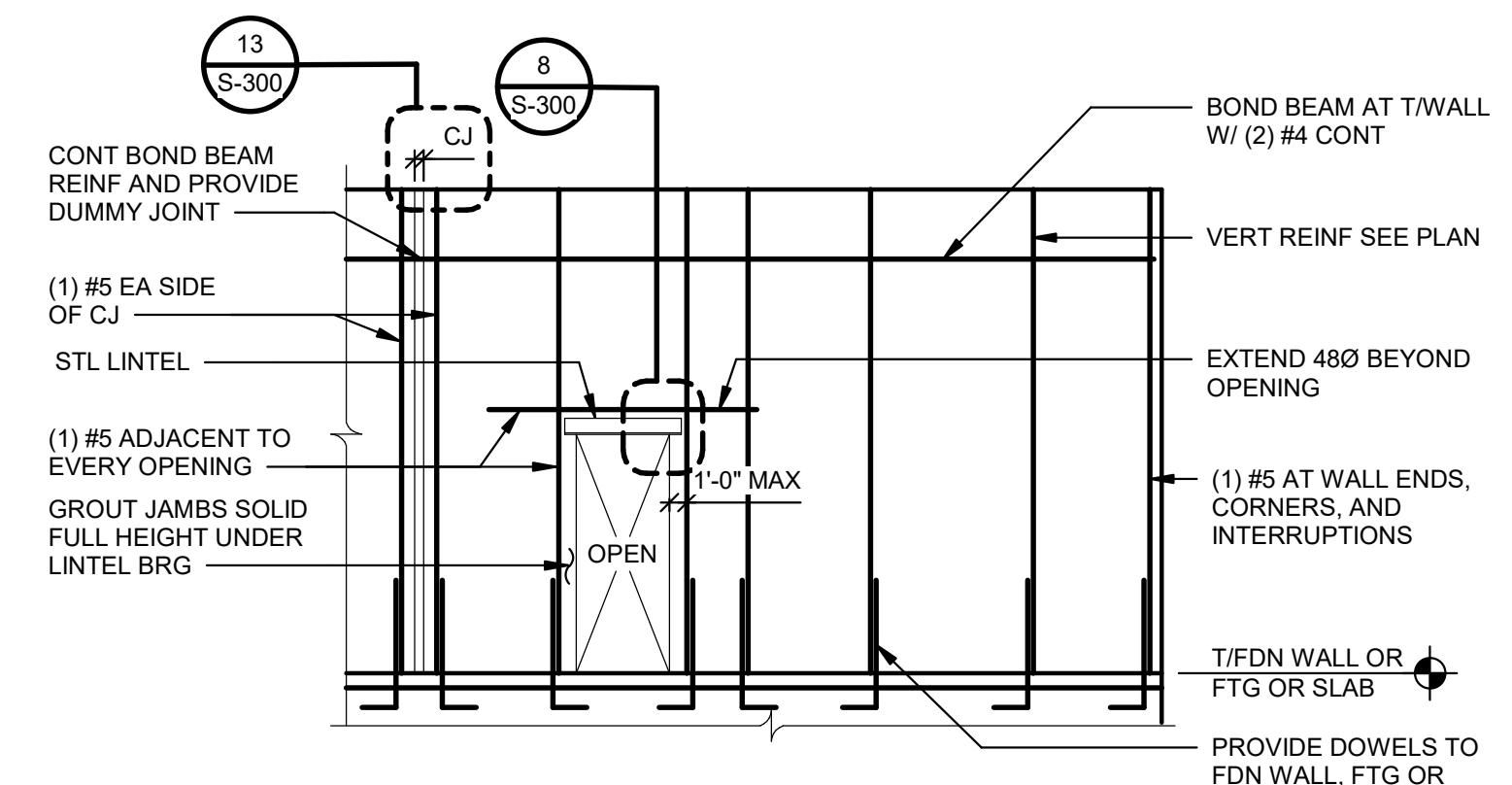
**4 SLAB SECTION AT PIPE**  
NOT TO SCALE  
NOTES:  
1. DO NOT UNDERMINE EXISTING SLAB.  
2. PROVIDE CONTROL JOINTS AT 15'-0" ON CENTER MAXIMUM ALONG THE LENGTH OF SLAB PLACEMENT.



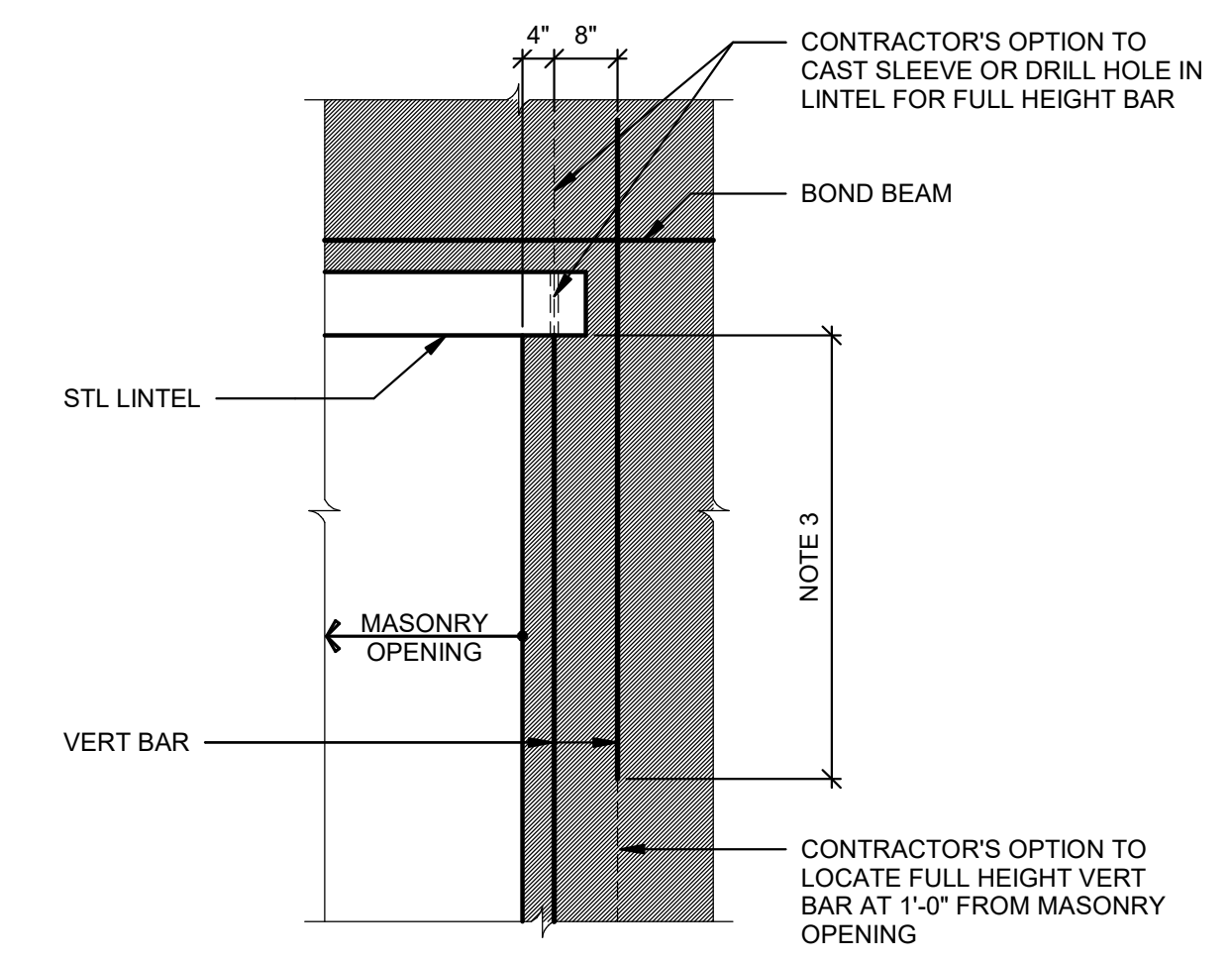
**5 SECTION AT PIER AT EXISTING WALL**  
SCALE: 3/4" = 1'-0"



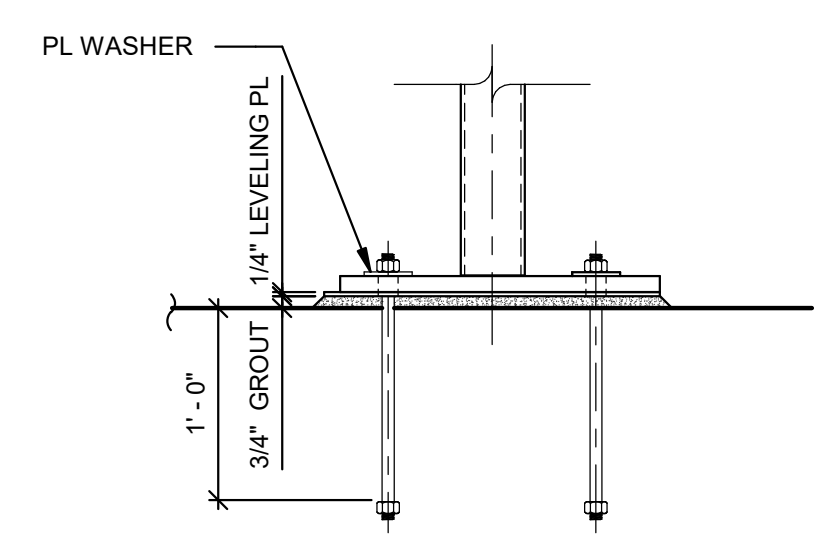
**6 PIER DETAILS**  
SCALE: 3/4" = 1'-0"  
NOTES:  
1. TIES ARE #3, TYPICAL UNLESS NOTED OTHERWISE. STAGGER HOOK LOCATIONS ON ALTERNATE TIES.  
2. SEE 5/S-300 FOR TIE SPACING AND SECTIONS AT PIERS.  
3. CONTINUE WALL REINFORCING THROUGH PIERS.  
4. SEE 10/S-300 FOR BASE PLATE DETAILS AND ANCHOR ROD INFORMATION.



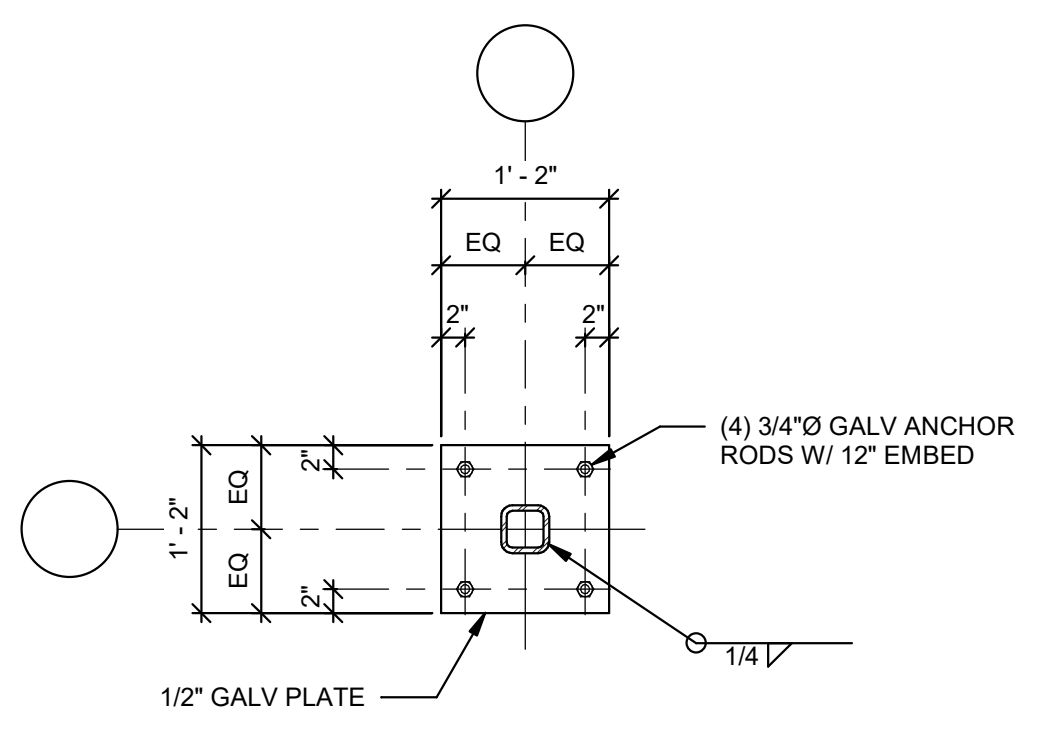
**7 MASONRY WALL REINFORCING ELEVATION**  
SCALE: 3/16" = 1'-0"  
NOTES:  
1. FULLY GROUT WALLS.  
2. REINFORCING SHOWN IS TYPICAL UNLESS NOTED.  
3. LAP REINFORCING BARS AS INDICATED IN THE MASONRY NOTES ON S001.  
4. PROVIDE LADDER TYPE HORIZONTAL JOINT REINFORCING AT 16" OC AND AT TOP TWO COURSES UNLESS NOTED OTHERWISE.



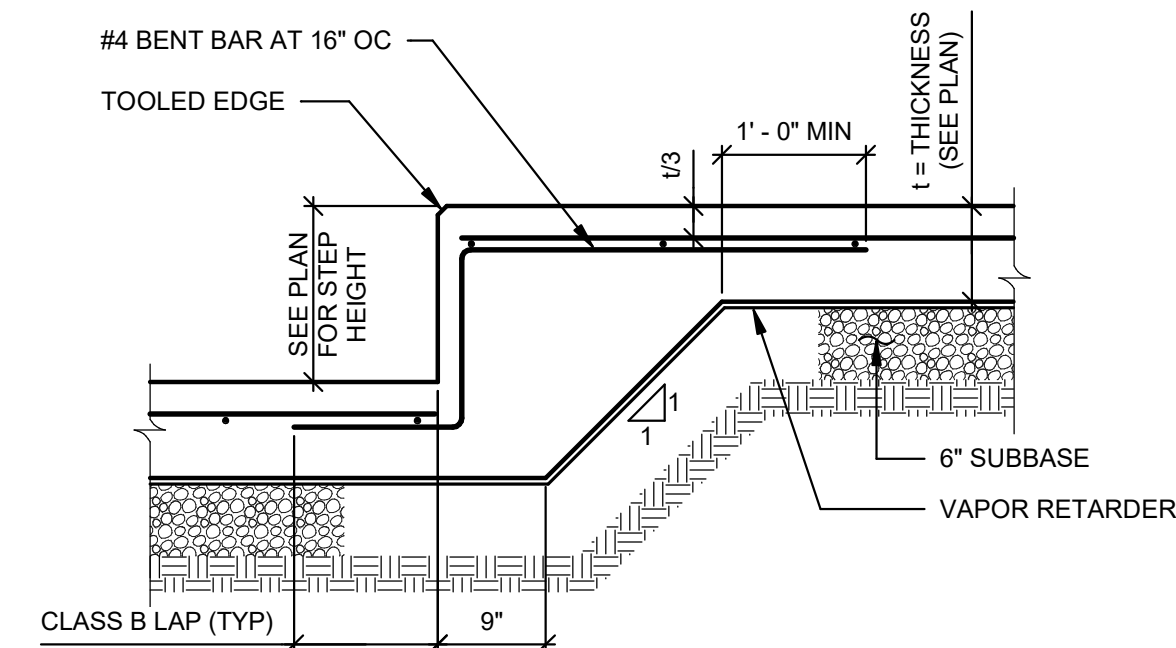
**8 WALL REINFORCING ELEVATION AT OPENING**  
SCALE: 1/2" = 1'-0"  
NOTES:  
1. TERM "FULL HEIGHT" REFERS TO SINGLE CORE REINFORCED FULL HEIGHT. BARS MAY BE LAPPED.  
2. LAP LENGTH SHALL BE THE LAP LENGTH INDICATED IN THE MASONRY NOTES ON S002 + 8 INCHES.  
3. SEE 13/S-300 FOR ELEVATION OF OPENING AT CONTROL JOINT.



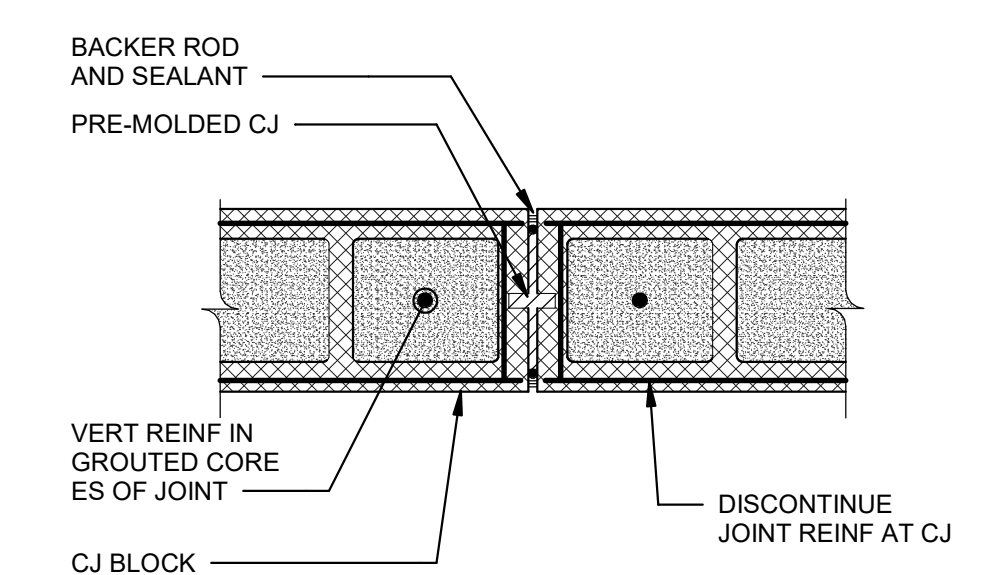
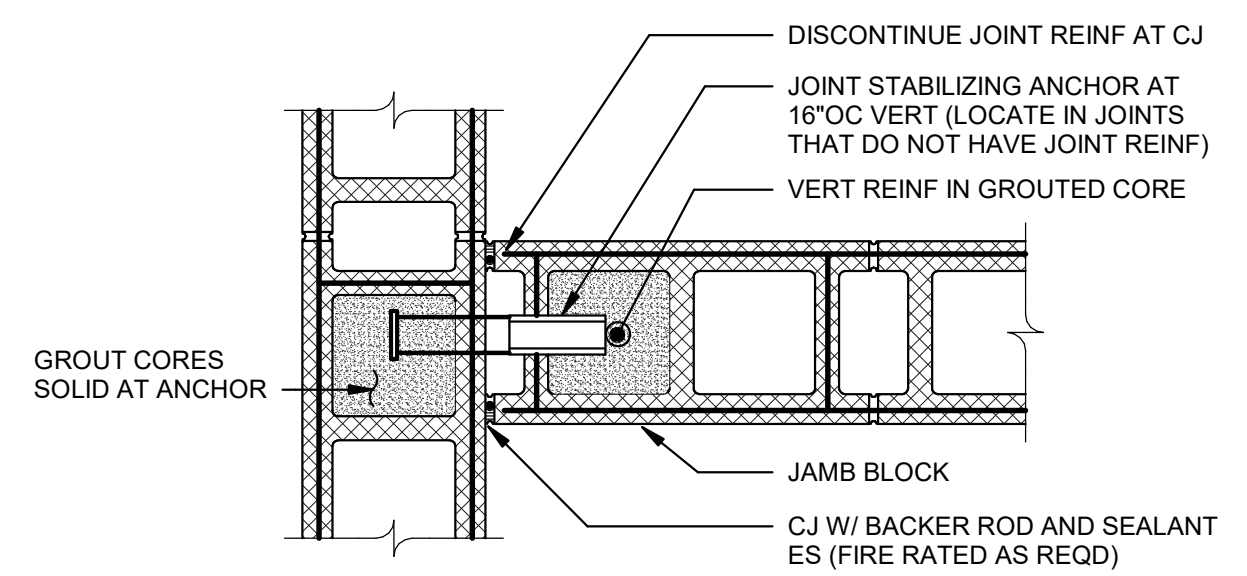
**9 COLUMN BASE DETAIL**  
NOT TO SCALE  
NOTE: HOOKED ANCHOR RODS ARE NOT PERMITTED.



**10 BASE PLATE DETAIL**  
SCALE: 3/4" = 1'-0"  
NOTE: SEE 9/S-300 FOR MORE INFORMATION



**12 SECTION AT SLAB ON GRADE STEP**  
NOT TO SCALE  
NOTE: BEGINNING OF SLAB STEP TO BE 18" FROM EXIST SLAB EDGE MIN.



**13 WALL CONTROL JOINT DETAIL**  
NOT TO SCALE